



These instructions cover proper installation of the fixed top insulated glass unit that is shipped without being fastened so that the window can be disassembled to allow drywall or other building materials to be passed through it more easily to upper stories. Even if the window is not used for this purpose, these instructions must be followed to secure the upper glass unit inside the frame. Follow the installation instructions that came with the window to install the window and then use this supplement to complete the installation.

Do-It-Yourself

Technician

IMPORTANT INFORMATION

Depending on the performance requirements of the product, the upper insulated glass unit may be tape glazed (fixed in the frame) or wet (silicone) glazed. All units will have tape already installed in the frame (usually red backing is visible from the exterior). Follow the tape glaze instructions for units below PG50. For units PG50 or greater, the wet glaze method must be followed.

CONTACT US

For questions or for replacement documents, please visit www.jeld-wen.com or feel free to contact us by phone or email:

- Phone: 1-(800)-JELD-WEN/1-(800)-535-3936
- Email: customerserviceagents@jeld-wen.com

PRECAUTIONS AND SAFETY

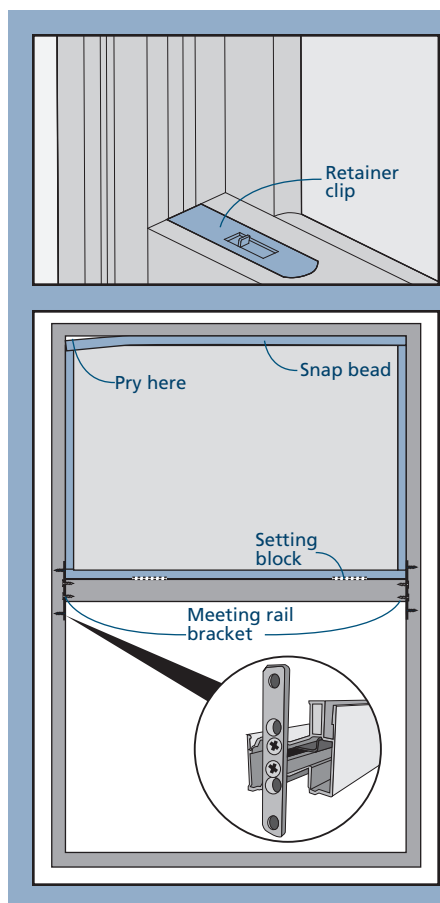
- This procedure involves handling insulated glass units outside of the window frame. They have very sharp edges. Handle with caution.
- Follow all manufacturers' instructions and labels.
- Use proper and safe equipment and precautions if servicing the exterior side of windows above ground level.
- Insect screens are not security devices and will not prevent children, other people, or pets from falling through.
- Use extra care when driving screws near glass unit to avoid breakage.
- Use caution when tightening screws to avoid stripping the screw holes.
- Handling window parts can be awkward and heavy and could cause physical injury or product damage; we recommend the help of a second person.

NEEDED TOOLS AND MATERIALS

- Gloves
- Glass cups
- Pencil
- Flat head screwdriver
- Putty knife
- Phillips head screwdriver
- Caulking gun
- Lint free cloth
- Isopropyl alcohol
- Glazing sealant (Dow 1199 or equivalent)

DISASSEMBLE THE UNIT

1. Open the lower sash half way, pull the retainer clips toward the center and tilt the sash to the interior until horizontal. Raise one corner of the sash until it is free of the jamb and bring the entire sash up to remove.
2. The upper, fixed insulating glass unit is held in place only by snap beads on the exterior. Starting at the top (mark the original locations of the snap beads) for a Builders or Brickmould (sides first on Premium windows), use a flat head screwdriver or putty knife to pry the snap beads toward the center of the glass until they pop out. Mark the original locations of the setting blocks (plastic pads on the meeting rail) with a pencil. Carefully tilt the glass out and remove.
3. From the interior, remove the visible top and bottom screws holding the meeting rail in place. Pull the meeting rail down and remove.



The advice offered herein can be done by a homeowner with some mechanical aptitude. If you are unsure, it is recommended that you hire a trained service provider such as a competent and licensed construction contractor or building professional. JELD-WEN disclaims any and all liability associated with the use and/or provision of these instructions. Any reliance upon the information or advice is at the risk of the party so relying. The information contained herein may be changed from time to time without notification.

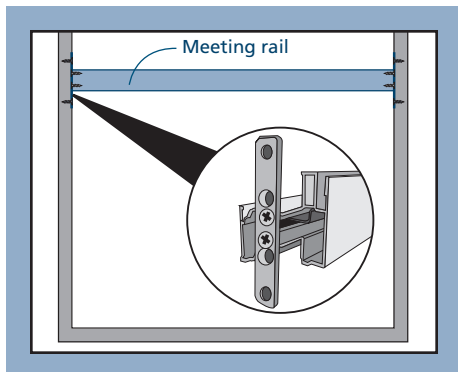
DISASSEMBLE THE UNIT - CONTINUED

4. Store window components in a protected place to avoid damage.
5. Construct a cover for the sill that will protect the sill against damage (do not penetrate the sill with nails or screws). Protect the rest of the frame as necessary.

REASSEMBLE THE UNIT - TAPE GLAZE METHOD (BELOW PG50)
From the interior:

1. Remove the sill cover and all protective materials from the frame.

2. Set the meeting rail in place in the correct orientation and secure with the original brackets. Make sure the glazing tape on the meeting rail and the glazing tape on the frame match up.



3. Replace the lower sash.

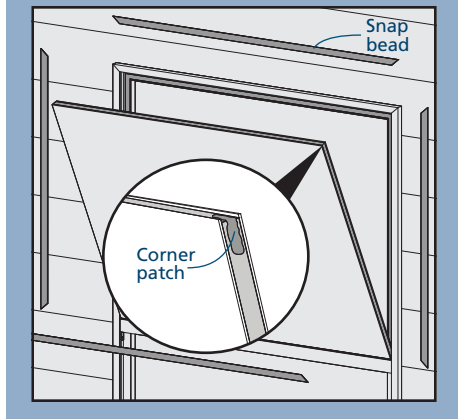
From the exterior:

1. Clean the glass around the edges where it will contact the glazing tape with a lint free cloth and isopropyl alcohol.
2. Place the setting blocks on the meeting rail in their original spots.
3. Remove the protective film from the glazing tape.
4. At the corners, place a dab of 100% silicone on all four glazing tape butt joints.



5. Orient the glass unit so the fourth corner patch is at the top right (the seal around the glass will have a "rough" appearance at the corner).

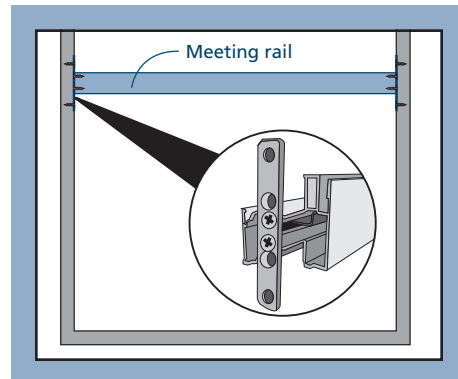
6. Set the glass unit on the setting blocks without letting the glass touch the glazing tape. Center horizontally. For glass units with grilles, make sure grille pattern and breaks in the horizontal and vertical bars are lined up.



7. Press the glass unit against the glazing tape.
8. Replace the snap beads in the opposite order of removal.

REASSEMBLE THE UNIT - WET GLAZE METHOD (PG50 AND ABOVE)
From the interior:

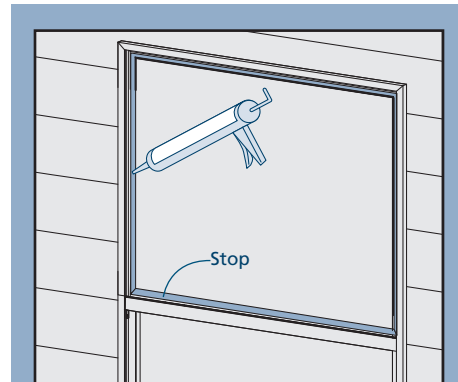
1. Remove the sill cover and all protective materials from the frame.
2. Set the meeting rail in place in the correct orientation and secure with the original brackets. Make sure the meeting rail and the frame match up.



3. Replace the lower sash.

From the exterior:

1. Clean the glass around the edges where it will contact the silicone glazing with a lint free cloth and isopropyl alcohol.
2. Place the setting blocks on the meeting rail in their original spots.
3. Remove the protective film from the glazing tape. Run a 1/8" continuous bead of glazing silicone around the entire frame stop where it will contact the insulated glass unit next to the tape.



4. Orient the glass unit so the fourth corner patch is at the top right (the seal around the glass will have a "rough" appearance at the corner).
5. Without letting the glass touch the silicone, set the glass unit on the setting blocks and center horizontally. For glass units with grilles, make sure grille pattern and breaks in the horizontal and vertical bars are lined up.
6. Press the glass unit into the silicone.
7. Replace the snap beads in the opposite order of removal.

